



Main Features

- Chipset: Atheros AR9382
- Standard: 802.11a/n
- Host interface: Mini PCIe
- Antenna: 2 x IPEX connectors, 2T2R
- Data rate up to 300Mbps
- Enhanced wireless security: WEP, WPA, WPA2

Product Overview

MWF220H is a specific design for the 5GHz Wi-Fi AP/CPE product which needs a mini PCIe form factor module to fit into the reserved mini PCIe slots. MWF220H offers excellent RF performance and high power features so that high throughput rate and large coverage range is easy to fulfill in the Wi-Fi AP/CPE systems.

Specifications

Standard

- Wi-Fi: IEEE802.11a/n , MIMO 2x2
- Chipset: AR9382
- Host Interface: PCIe

Software

- Support Windows, Linux driver
- Security: WEP, WPA, WPA2

Wi-Fi Frequency Ranges

- 5 GHz
 - USA: 5.15 ~5.25 GHz, 5.725~5.825 GHz
 - Europe: 5.15~5.35 GHz, 5.47~5.725 GHz

RF Output Power :

- 802.11a
 - 6Mbps: 27 dBm
 - 54Mbps: 24 dBm
- 802.11 an
 - MCS0: 27 dBm
 - MCS7: 24 dBm

RF Receive Sensitivity:

- IEEE802.11a
 - -95dBm@6M
 - -76dBm@54M
- IEEE802.11a/n HT20
 - -74dBm@MCS7
- IEEE802.11a/n HT40
 - -71dBm@MCS7

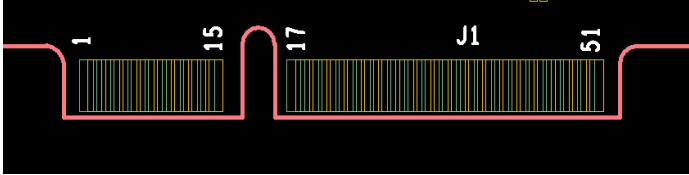
Physical and Power

- Operating Voltage: DC 3.3V & DC 5V (for high power PA)
- Power consumption: 5W (Max.)
- Operating temperature: -40~75°C
- Storage temperature: -40~85°C
- Dimension: 29.8 mm x 26.8 mm x 4.25 mm
- Weight: 5 g

Certification

- FCC
- CE

Mini PCIe Pin Definition



PIN	Definition	PIN	Definition
1	WAKE_L	2	3.3V
3	RESERVED	4	GND
5	RESERVED	6	NC
7	CLKREQ_L	8	NC
9	GND	10	NC
11	REFCLK-	12	NC
13	REFCLK+	14	NC
15	GND	16	NC
17	NC	18	GND
19	NC	20	W_DISABLE_L
21	GND	22	PERST_L
23	PERn0	24	3.3VAUX
25	PERp0	26	GND
27	GND	28	NC
29	GND	30	NC
31	PETn0	32	NC
33	PETp0	34	GND
35	GND	36	USB_D-
37	NC	38	USB_D+
39	3.3V	40	NC
41	3.3V	42	NC
43	GND	44	LED_WLAN_L
45	RESERVED	46	NC
47	RESERVED	48	NC
49	5V	50	GND
51	5V	52	3.3V

Ordering information

High power 11a/n Mini PCIe module
P/N: 20T00022000X0