



Main Features

- Chipset: Atheros AR9382
- Standard: 802.11a/g/n
- Host interface: Mini PCIe
- Antenna: 2 x IPEX connectors, 2T2R
- Data rate up to 300Mbps
- Enhanced wireless security: WEP, WPA, WPA2

Product Overview

MWF220HDB is a specific design for the Dual band Wi-Fi AP/CPE product which needs a mini PCIe form factor module to fit into the reserved mini PCIe slots. MWF220HDB offers excellent RF performance and high power dual band (5GHz/ 2.4GHz) function so that high throughput rate and large coverage range is easy to fulfill in the Wi-Fi AP/CPE systems.

Specifications

Standard

- Wi-Fi: IEEE802.11a/g/n , MIMO 2x2
- Chipset: AR9382
- Host Interface: PCIe

Software

- Support Windows, Linux driver
- Security: WEP, WPA, WPA2

Wi-Fi Frequency Ranges

- 2.4 GHz
 - 2.412-2.472 GHz
- 5 GHz
 - USA: 5.15 ~ 5.25 GHz, 5.25 ~ 5.35 GHz , 5.47 ~ 5.725 GHz, 5.725 ~ 5.85 GHz
 - Europe: 5.15 ~ 5.25 GHz, 5.25 ~ 5.35 GHz , 5.47 ~ 5.725 GHz, 5.745 ~ 5.825 GHz

RF Output Power :

- 802.11a
 - 6Mbps: 27 dBm
 - 54Mbps: 24 dBm
- 802.11g
 - 6Mbps: 27 dBm
 - 54Mbps: 24 dBm
- 802.11 a/n/gn
 - MCS0: 27 dBm
 - MCS7: 24 dBm

RF Receive Sensitivity:

- IEEE802.11a
 - -95dBm@6M
 - -76dBm@54M
- IEEE802.11a/n HT20
 - -74dBm@MCS7
- IEEE802.11a/n HT40
 - -71dBm@MCS7
- IEEE802.11g
 - -94dBm@6M
 - -80dBm@54M
- IEEE802.11g/n HT20
 - -74dBm@MCS7
- IEEE802.11g/n HT40
 - -71dBm@MCS7

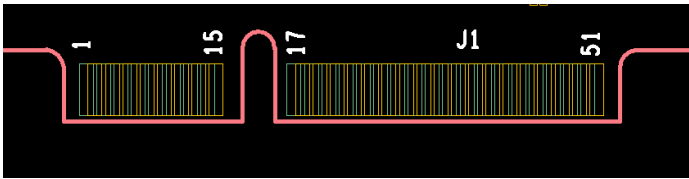
Physical and Power

- Operating Voltage: DC 3.3V & DC 5V (for high power PA)
- Power consumption: 5W (Max.)
- Operating temperature: -40~75°C
- Storage temperature: -40~85°C
- Dimension: 50 mm x 50.8 mm x 4.25 mm
- Weight: 5 g

Certification

- FCC
- CE

Mini PCIe Pin Definition



PIN	Definition	PIN	Definition
1	WAKE_L	2	3.3V
3	RESERVED	4	GND
5	RESERVED	6	NC
7	CLKREQ_L	8	NC
9	GND	10	NC
11	REFCLK-	12	NC
13	REFCLK+	14	NC
15	GND	16	NC
17	NC	18	GND
19	NC	20	W_DISABLE_L
21	GND	22	PERST_L
23	PERn0	24	3.3VAUX
25	PERp0	26	GND
27	GND	28	NC
29	GND	30	NC
31	PETn0	32	NC
33	PETp0	34	GND
35	GND	36	USB_D-
37	NC	38	USB_D+
39	3.3V	40	NC
41	3.3V	42	NC
43	GND	44	LED_WLAN_L
45	RESERVED	46	NC
47	RESERVED	48	NC
49	5V	50	GND
51	5V	52	3.3V

Ordering information

Dual band high power 11a/g/n Mini PCIe module
P/N: 20T00022001X0